

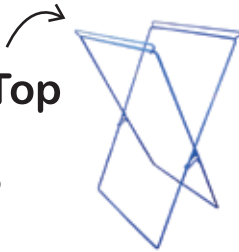


# Step-by-Step Instructions

Make copies of these set up instructions to hand out to your crew!

## Begin by Opening the Frame with Loops on Top

The 80% recycled content, 3/8" thick steel frame literally sets up in seconds.



## Center the Bag on the Frame

Open bag, place in center and line up the printing before locking it to the frame.



## How to Lock the Bag to the Frame



### PULL THROUGH

Work from inside to outside. Using two hands pull top edge of bag through the loop toward you approximately 6".



### PUSH OVER

Still using two hands, push the top edge of the bag over the loop approximately 6", catching the corners.

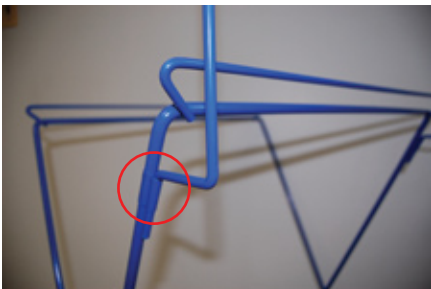


### TIGHTEN

Now, grasp both sides of the bag. Pull down and in to tighten bag around the corners. **Repeat on the other side.**

## Optional:

Insert the Billboard into the two slots on the frame before adding the lid.



## Notice how the Bag Locks Over Loops



## Finally... Snap the Lid to the Frame

The lid has four hidden clips which snap securely to the frame. **You're Ready!**



Scan this QR code with your smart phone to visit our website.



Video instructions are available on YouTube at [youtube.com/howtorecycle](https://youtube.com/howtorecycle).

855-411-4321 (Toll Free Number)

[www.ClearStreamRecycling.com](http://www.ClearStreamRecycling.com)

[sales@cs-rec.com](mailto:sales@cs-rec.com) | [www.cs-rec.com](http://www.cs-rec.com)

Fax 708-489-2260

6420 W. 127th Street, Unit 212

Palos Heights, IL 60463